



DESIGNER COLLECTION TUBS MODEL # 94A

Andrea® 4 with Sculpted Finish® 65.875" x 32" x 22.25"

GENERAL SPECIFICATIONS:

Material - Acrylic

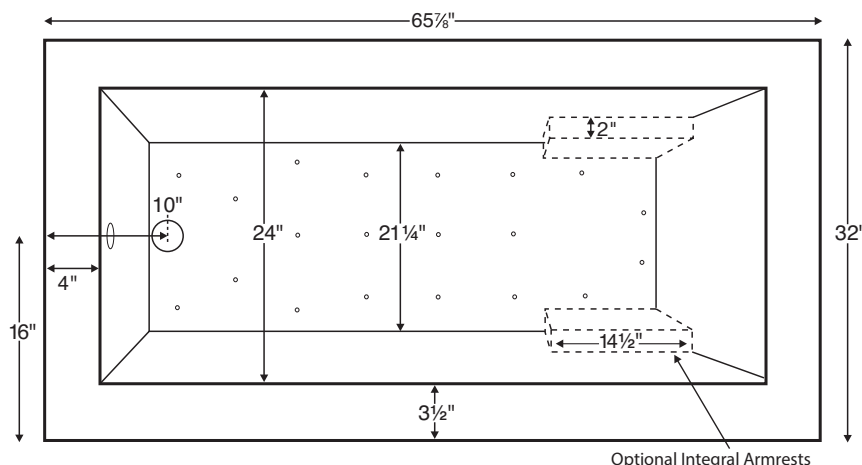
Installation - Freestanding* (see note to left)

Soaker Weight - 167 lbs / 76 kg

Maximum Fill - 85 gal to overflow

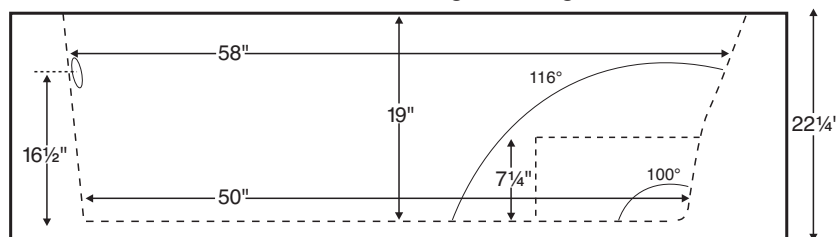
NOTE: Filling this tub to the maximum may require an above average size or dedicated water heater.

*Sculpted Finish is standard on 4 sides, creating a freestanding tub design.
Also available finished on 1, 2 or 3 sides for various installation applications.



The Sculpted Finish process does not allow enough space for mounting fixtures on the tub deck.

Shown with Air Massage Package.



ELECTRICAL COMPONENTS & SPECIFICATIONS

Required Electrical Service - 110 Volt

| Hydrotherapy Package | Components Included | GFCI |
|----------------------|------------------------------|----------|
| Air Massage | heated blower | 1-15 amp |
| Air Massage Elite | heated blower, chromatherapy | 1-15 amp |

For electrical requirements of tub options, see page C-2.

CSA Certified C/US; ANSI Z124.1 for plastic tubs and ANSI 112.19.7 for whirlpool components.

IMPORTANT ORDERING & INSTALLATION INFORMATION:

- Before ordering or installing, please consider future access to equipment.
- Unless ordering Sculpted Finish on 4 sides, please include a diagram specifying which sides will need to be finished, along with location of optional tile flange.
- Overflow **must** be factory installed if drain end is sculpted. Please select drain from options on next page.
- When ordering an air bath, the air blower must be remote mounted.
- If tub is equipped with Chromatherapy, the control box must be remote mounted.
- Specifications and configurations are subject to change without notice.
- Measurements are $\pm 1/2$ " and are subject to change without notice.
- Measurements herein supersede all others published prior to publication date shown below.

See the "Designer Collection Tubs Installation & Operation Manual" included with tub delivery or go to mtibaths.com/support/installation_operation/manuals for all the information necessary to install and operate the tub.

MTI's Customer Service Department is available Monday-Friday 8am-6pm EST at 800-783-8827 or customerservice@mtibaths.com to answer any questions pertaining to ordering or installation.



| Hydrotherapy Packages | Package Contents | Sculpted Finish Sides | Part # | MSRP |
|--------------------------|---|-----------------------|-------------------------|-----------------|
| Soaker | Soaking bath - no jets, pre-leveled foam base | 4-sides sculpted | S94A + SCULPT4 | \$6,325 |
| | | 3-sides sculpted | S94A + SCULPT3 | \$5,850 |
| | | 2-sides sculpted | S94A + SCULPT2 | \$4,715 |
| | | 1-side sculpted | S94A + SCULPT1 | \$4,435 |
| Air Bath Packages | <i>Air Massage</i> 20 air jets, heated air blower, pre-leveled foam base | 4-sides sculpted | AST94A + SCULPT4 | \$8,925 |
| | | 3-sides sculpted | AST94A + SCULPT3 | \$8,450 |
| | | 2-sides sculpted | AST94A + SCULPT2 | \$7,315 |
| | | 1-side sculpted | AST94A + SCULPT1 | \$7,035 |
| | <i>Air Massage Elite</i> 30 air jets, heated air blower, Chromatherapy LED lighting, pre-leveled foam base | 4-sides sculpted | AE94A + SCULPT4 | \$10,525 |
| | | 3-sides sculpted | AE94A + SCULPT3 | \$10,050 |
| | | 2-sides sculpted | AE94A + SCULPT2 | \$8,915 |
| | | 1-side sculpted | AE94A + SCULPT1 | \$8,635 |

Lead Time - 20 business days (any configuration)

| Premium Options | NOTE: part codes for all options listed in parenthesis. |
|---|---|
| Radiance - integrated tub shell heating system (RAD100) \$999 <i>see p. C-5</i> | |
| Chromatherapy - underwater LED lighting (LE) \$560 <i>see p. C-6</i> | |
| Stereo H₂O - includes 4 integrated audio transducers (STEREOH20) \$1,099 <i>Requires audio source(s) and amplification not provided by MTI - see p. C-7.</i> | |
| Standard Options | |
| Color: White (CWH) <i>Note: this tub is only available in white.</i> | |
| Textured, Slip-Resistant Bottom - meets ASTM F-462-1994 (TXBTM) \$70 | |
| Integral Armrests - 1 pair (INTARM) \$95 <i>see p. C-10</i> | |
| Teak Seat for use with armrests (TK-REMTSEAT) \$395 <i>see p. C-15</i> | |
| Accessories & Hardware | |
| Floor-Mounted High-Flow Tub Filler - two designs available - <i>see p. C-16</i> Contemporary - Chrome (FILLC) \$1,900 ; Brushed Nickel (FILLBN) \$2,050 Traditional - Chrome (FILLTC) \$1,900 ; Brushed Nickel (FILLTBN) \$2,050 | |
| Drain Kits - other finishes also available <i>see pp. C-12-13</i> | |
| Toe-Tap with Slim-Line Integrated Overflow <i>Choose from:</i> Chrome (SLOT C), Brushed Nickel (SLOTBN), Polished Nickel (SLOT PN) or White (SLOTWH) \$400 | |
| Toe-Tap with Rectangular Overflow - Chrome (WOTRC) \$260 ; Brushed Nickel (WOTRBN) \$265 ; White (WOTRW) \$265 | |
| Toe-Tap with Round Overflow - Chrome (WOTTC) \$260 ; Brushed Nickel (WOTTBN) \$265 ; Polished Nickel (WOTTPN) \$315 | |
| Cable Driven - Chrome (WOCD) \$290 ; Brushed Nickel (WOCD BN) \$335 ; Polished Nickel (WOCD PN) \$475 ; Oil-Rubbed Bronze (WOCDOR) \$475 | |
| Lift & Turn - Chrome (WOC) \$115 ; Brushed Nickel (WOBN) \$210 | |
| Pillows - from \$115 <i>see p. C-14</i> | |
| Teak Tub Tray - Slatted (TK-TRAY1) or Solid (TK-TRAY2) \$395 <i>see p. C-15</i> | |
| Teak Bath Mat (TK-MAT3018) \$395 <i>custom sizes also available - see p. C-15</i> | |
| Installation Aids | |
| Tile Flange <i>must specify flange location(s) on order - see p. C-25</i> Factory-Installed on 3 sides - rigid ABS (TFK3) \$175 Field Install Kit - includes rigid ABS & adhesive (TFKNI) \$160 | |

Options Information

Radiance -

Integrated tub surface heating system designed to warm the interior surface of the bathing well. Utilizes electric heating grids for 2 zones; either both backrests or a single backrest and one seated area of the tub floor. See page C-5 for detailed specifications.



Chromatherapy -

Underwater lighting provided by two digitally controlled LED lights. A control button allows a selection of constant colors or preset programs to achieve the desired lighting effects & utilize these chromatic energy sources. See page C-6 for detailed specifications.



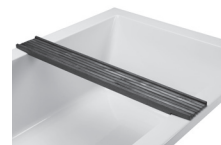
Floor-Mounted High-Flow Tub Filler -

Choose from contemporary or traditional design to complement most manufacturers' lavatory & shower faucets. Fill rate of 15 gallons per minute at 45 psi. Includes hand-held shower with independent valve. See page C-16 for detailed specifications.



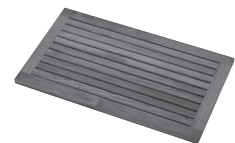
Teak Tub Tray -

Ideal surface for holding a book, beverage or bath accessories. Two styles available. See page C-15 for detailed specifications.



Teak Bath Mat -

Provides a slip-resistant surface to enter and exit the bath. Smooth, durable teak combines beauty with practicality. See page C-15 for detailed specifications.



Inside view of tub.

